



## Data Sheet CODESYS PROFINET Controller (for EL6631) SL

CODESYS PROFINET Controller (for EL6631) SL is a product that end users can use to implement a PROFINET network with a CODESYS compatible controller and CODESYS EtherCAT

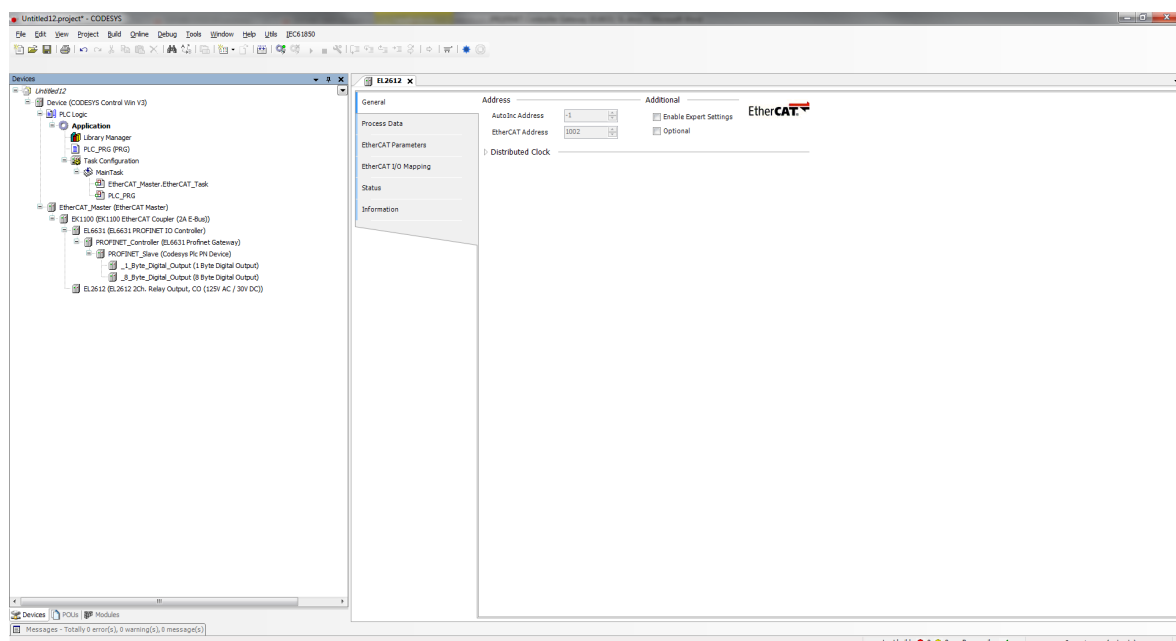
### Product description

The EL6631 gateway terminal from Beckhoff allows an EtherCAT enabled controller to register itself as a PROFINET controller with other PROFINET I/O devices in a PROFINET network. For CODESYS compatible controllers to use this functionality, they require CODESYS PROFINET Controller (for EL6631) SL. With this product, project engineering of the functionality is possible in the CODESYS Development System. For this purpose, the terminal is integrated and configured as an EtherCAT object in the device tree of an IEC 61131-3 project. End users of CODESYS compatible controllers with EtherCAT are therefore provided with the option for configuring their device as a PROFINET controller and establishing their own PROFINET networks. With the gateway functionality of the EL6631 terminal module, no additional Ethernet ports or other hardware is required on the existing controller.

A special device description for the EL6631 gateway terminal allows integration into an appropriate EtherCAT fieldbus coupler (example: EK1100) of the CODESYS project according to the physical configuration of the hardware.

### Architecture

Typical structure in the CODESYS device tree:



## General information

### Supplier:

CODESYS GmbH  
 Memminger Strasse 151  
 87439 Kempten  
 Germany

### Support:

Technical support is not included with this product. To receive technical support, please purchase a CODESYS Support Ticket.

<https://support.codesys.com>

### Item:

CODESYS PROFINET Controller (for EL6631) SL

### Item number:

2303000009

### Sales / Source of supply:

CODESYS Store  
<https://store.codesys.com>

### Included in delivery:

- License key

## System requirements and restrictions

<b>Programming System</b>	CODESYS Development System V3.5.7.0 or higher
<b>Runtime System</b>	CODESYS Control V3.5.7.0 or higher
<b>Supported Platforms/ Devices</b>	Note: Use the project "Device Reader" to find out the supported features of your device. "Device Reader" is available for free in the CODESYS Store.
<b>Additional Requirements</b>	<ul style="list-style-type: none"> <li>• Available EtherCAT Master and Ethernet port on the device</li> <li>• WIBU Codemeter support</li> </ul>
<b>Restrictions</b>	<ul style="list-style-type: none"> <li>• Maximum of 15 PROFINET slaves are supported</li> </ul>
<b>Licensing</b>	



Single Device License: The license can be used on the target device/PLC on which the CODESYS Runtime System is installed.

Licenses are activated on a software-based license container (soft container), which is permanently connected to the controller. Alternatively the license can be stored on a CODESYS Key (USB-Dongle). By replugging the CODESYS Key, the license can be used on any other controller.

---

**Required Accessories**

- PROFINET master terminal EL6631 (Beckhoff)
  - Optional: CODESYS Key
- 

*Note: Technical specifications are subject to change. Errors and omissions excepted. The content of the current online version of this document applies.*

Creation date: 2023-04-17